

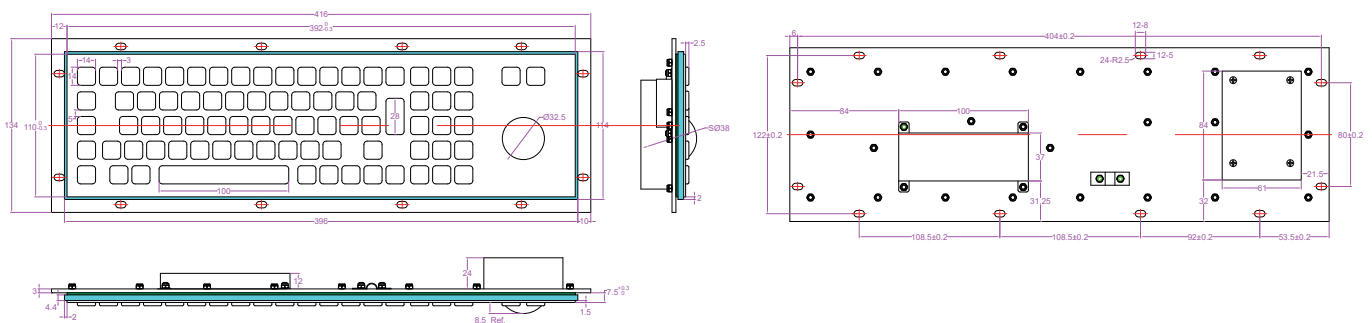
Industrial Keyboards | INOX Series | GPK-A392-MTB-KP

MODEL NO.: GPK-A392-MTB-KP

DESCRIPTION:

81 Keys compact format IP65 static Vandal Proof Stainless Steel Industrial Keyboard with IP65 static 38.0mm stainless steel mechanical trackball module with 400 DPI resolutions, industrial PCB with carbon-on-gold key switch technology with stroke(1.50mm±0.10mm) with extremely good tactile feeling for fast and accurate data input without any noise, numeric keypad, with rear panel mounting solution.

DIMENSIONS: 392.0mm x 110.0mm (top panel)



* All technical data, specification and performance figures subject to change without notice.

Industrial Keyboards | INOX Series | GPK-A392-MTB-KP

APPLICATION

- This Keyboard is mainly targeted for use for unsupervised or semi-supervised positions of varied access applications, internet terminals and information kiosks at universities, shopping malls, hotels, banks, airports, railway-stations and other public areas, ticket vending machines, gas stations, cash machines (ATMs/CDM), Internet public phones etc.

MAIN FEATURE

- Imposing stainless steel design, specially designed keyboards meet the highest demands with regard to design, functionality, longevity and high protection level.
- Stainless steel fascia and key-tops guard willful destruction, vandal-proof, against corrosion, weather-proof especially under extreme climatic conditions, water proof/dirt proof, operation under hostile environments.
- Waterproof execution according to IP65 protection from top panel, rear aluminium plate with mounting holes easily & tightly mounting to enclosure or panel.
- An excellent tactile feel with full-long travel switches and allow users to achieve fast and accurate data input without any noise. With firm tactile perception for comfortable operation
- Internet friendly key layout, key-tops are laser-etched in legends and characters for easy readability, long life to prevent lettering rub-off.
- Metal keys are protected against twisting and levering which can not be dislodged from front, or defaced removing key covers.
- Ease of customizing with multiple languages, to accommodate foreign or custom variants.
- Complete electronic modules including controller in close consultation with our customers are available.
- PS/2, USB connection plug and play with PC via PC existing OS driver, no needing of install separate driver.

MECHANICAL DATA

- Actuator/keys: 81 keys, super quality SUS304 brushed stainless steel
- Key top style: Protuberant rectangular keys, laser engraved & etched legends & raised braille on keys are available
- Key Size: 14.0mm x 14.0mm for normal keys, 14.0mm x 28.0mm for enter key, 14.0mm x 100.0mm for space bar.
- Key travel: 1.50mm
- Actuation Force: 0.6 N+/-0.1N for key 14.0mm x 14.0mm (pressure point), 1.2 N+/-0.1N for key 14.0mm x 28.0mm (pressure point)
- Switch life: more than 5 million of operations.
- Front Plate: 1.5mm thickness super quality brushed stainless steel
- Back Plate: 3.0mm thickness brushed and oxidized aluminium
- Tracker ball: 38.1mm (1.5") diameter, IP65 static 400DPI mechanical trackball

Industrial Keyboards | INOX Series | GPK-A392-MTB-KP

ELECTRICAL DATA

- Supply Voltage: +5V DC +/-5%
- Current Rating: appr. 50mA
- EMC Standard: EN 55032:2015, EN 55035:2017
- Lifespan > 5 years
- Switch Contact Material: Carbon-on-Gold key switch technology PCB.
- Interface: PS2, USB or RS232
- OS: All Windows, Linux, Unix, Mac OSX, Vxworks, Android

ENVIRONMENTAL ADAPTABILITY

- Operating temperature: -20°C to +65°C
- Storage temperature: -30°C to +75°C
- Operating RH: 30-90%
- Atmospheric pressure: 60-106Kpa.
- Saline mist: 96 hours, IEC 60512-6
- Damp heat test at + 40°C: 21 days, IEC 60512-6
- Dry heat test at + 85°C: 10 days, IEC 60512-6

RELIABILITY

- RoHS Compliant, CE and FCC, ESD
- Protection Level: IP65(front panel)
- Vandal resistant IK09
- Key Lifespan >10 million actuations
- MTBF >50000H
- MTTR <30min